

Kona Wreath



Empty Spools Seminars March 2-7 2025

My inspiration for this wall-hanging comes from my childhood living in Oahu. The center tropical floral block is framed with a unique applique border with hibiscus border with pineapple corner stones. Learn how to make this border with 2 templates that repeated around the quilt. Learn how to use the border techniques to design your own unique borders. It's the perfect place to start either for a beginners and experienced applique student. Join Pearl as she guides you through careful prep work for perfect applique results; and let her introduce you to her uniquely successful techniques she has developed. Learn Pearl's "Off the block" prepared edge freezer paper applique techniques. Perfect your applique skills as we learn the basic step to make: "any size Perfect Bias Stems," reverse applique, sharp points, perfect circles, plus smooth concave & convex shapes. Pearl's workshops are always open for independent studies please feel free to work on any applique project of your choice.

Level: All
Finished size 42" x 42"

PDF Downloadable Pattern purchase required.

Page 1 of 3

Pearl P. Pereira

www.p3designs.com

Kona Wreath wall-hanging is filled with a lot of fun appliqué shapes that allow you to learn new appliqué techniques. Learn how to make this unique border with 2 templates that repeated around the quilt. Learn how to use the border techniques to design your own unique borders or bring any appliqué project for independent study.
Finished Wall-hanging 42" x 42"

*These items on my website: www.p3designs.com - Pattern Purchase required: Kona Wreath PDF pattern

Fabric Requirements to make the Wallhanging

Finished Wall-hanging 42" x 42"

1 3/4 yards for block and 2nd borders
1/4 yard for 1st border
1 yard for border applique
1/2 yard for binding

Applique Fabrics:

Assorted fat quarters
yellow, light green, dark green, red, tan,
brown, tan, lavender, purple, pink, orange,
blues

Center Block Before class:

Cut your background fabric 25 1/2" x 25 1/2"

Step 1. Hand trace or print template shapes on
Ultimate Applique Template paper.

Step 2.

Pre shrink template paper. For more information on this refer to my Off-The-Block Applique book page 30.

Step 3.

If you have a Silhouette Cameo cutting machine, after you purchase the Kona Wreath PDF pattern email me at pearl@p3designs.com to let me know you need the SVG cutting files and I will send them to you.

Step 4.

Tape or use Roxanne's glue baste to assemble your full size pattern matching the dash lines following the diagram in your pattern.

Supplies:

Off-The-Block Applique Book*
Applique Pressing Tool*
Applique Stiletto*
Cheri's Cool Tool Iron*
Ultimate Appliqué Template Paper or freezer paper*
Bohin Brush Water Brush or 1/8" stencil Brush*
3/4" Bohin applique pins*
Applique Pressing Sheet 13" x 17" for pressing freezer paper*
P3 Designs Straw Needle #11*
Roxanne's Glue-Baste-It*
Spray Starch - I like Niagara Non Aerosol
Small container for your starch
Black and Red Extra Fine Point Sharpie
Irons - Small Travel size Iron
Ironing mat
Sharp fabric scissors
Paper Scissors

26" x 26" square, 1/4" foam core board
Parchment Paper - the kind you bake with, large enough to cover your foam core board.

Rotary cutter, ruler & mat to cut fabric
Table-top light & multi-plug extension cord

Optional :

Something to cover your work at night (optional)

Kona Wreath Wall-hanging Applique Color Guide



Center block Background
25 1/2" x 25 1/2" square



Bird of Paradise

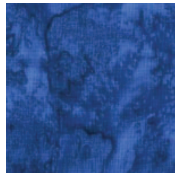
Ukulili

Leaves

Leaves

Leaves

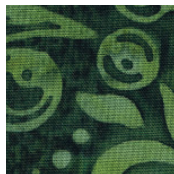
Stem



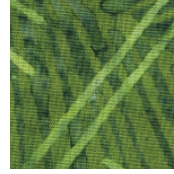
Leaves



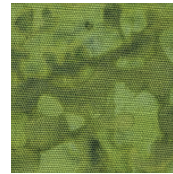
Leaves



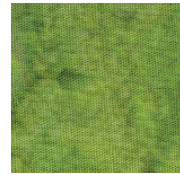
Hibiscus



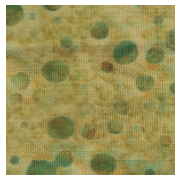
Hibiscus



Hibiscus



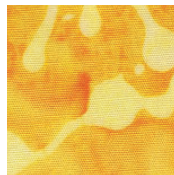
Coffee Flowers



Bird of Paradise



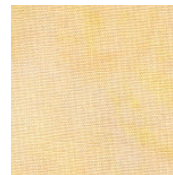
Bird of Paradise



Bird of Paradise



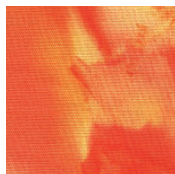
Bird of Paradise



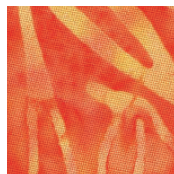
Plumeria



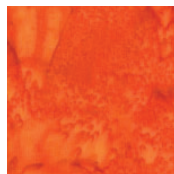
Orchids



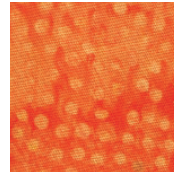
Orchids



Circle & Flowers



Berries



Ukulili

